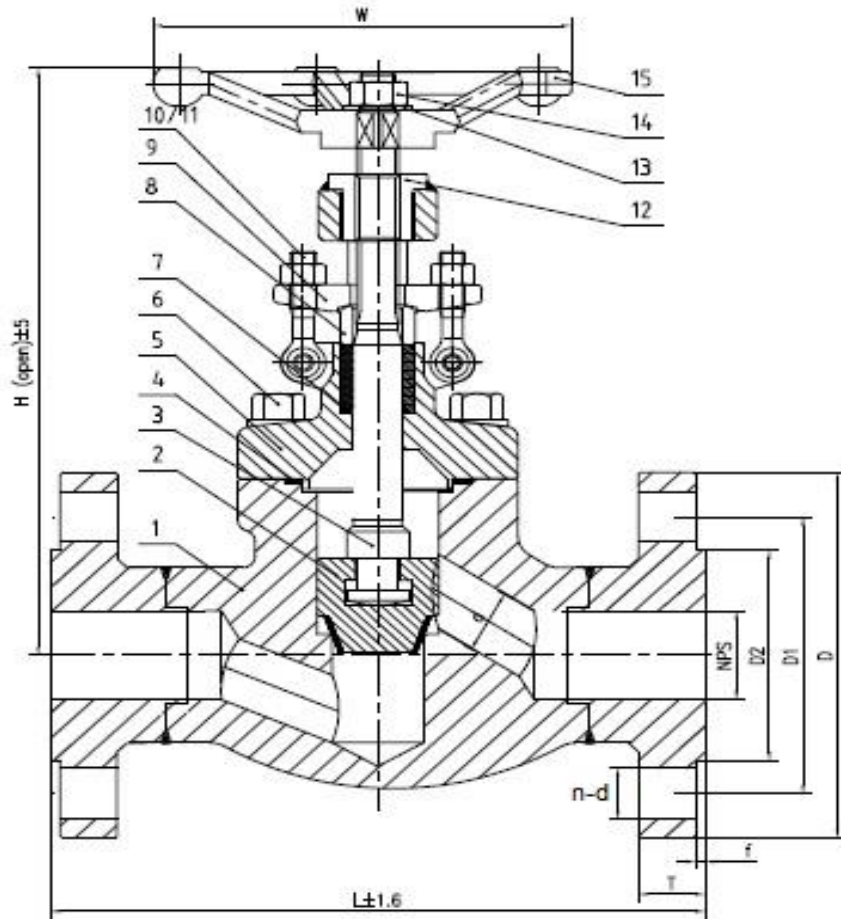


TYPE: A5GL1-A150

GLOBE VALVE - CLASS 150 - FORGED STEEL ASTM A105N

FLANGE END ANSI-150



NO.	PART NAME	MATERIAL
1	Body	ASTM A105N+SS304
2	Disc	ASTM A182 F6a
3	Stem	ASTM A182 F6a
4	Gasket	SS+Graphite
5	Bonnet	ASTM A105N
6	Bolt	ASTM A193 B7
7	Packing	Flexible Graphite
8	Gland	ASTM A276 410
9	Gland Flange	ASTM A105N
10	Gland Nut	ASTM A194 2H
11	Gland Eyebolt	ASTM A193 B7
12	Yoke Nut	ASTM A1035
13	Nameplate	SS304
14	Bolt	C.S.
15	Handwheel	A197

DIMENSIONS:

SIZE	DN	d	L	H	W	D	D1	D2	T	f	n-ød
1/2	15	10	108	170	96	90	60.5	35	11	2	4-16
3/4	20	13	117	172	96	100	70	43	12.5	2	4-16
1	25	17	127	207	120	110	79.5	51	14	2	4-16
1-1/4	32	22	140	228	156	115	89	63.5	16	2	4-16
1-1/2	40	27	165	270	156	125	98.5	73	17.5	2	4-16
2	50	33	178	320	178	150	120.5	92	19	2	4-19

MANUFACTURE
STANDARD

Valve Design	API 602 - BS5352
Test and Inspection	API 598
End Flange	ASME B16.5
Face to Face	ASME B16.10
Temperature	-29 - 425 °C

Drawing No.	Date	Type	Rev. No.	By
A51007	2015.05.30	A5GL1-A150	03	AT

FLANGE END ANSI-150