

Allfluid Pressure Switch Series ADS

Electromechanical Pressure Switch

Switching Point adjustable: 0.2 to 2 bar
0.5 to 8 bar
1.0 to 16 bar



Features

The Allfluid Pressure Switch Series ADS converts the pressure in fluids into an electrical signal. The switching point, using an adjusting knob, is fully adjustable within different pressure setting ranges continuously (see Technical Data – Operating Pressure Range).

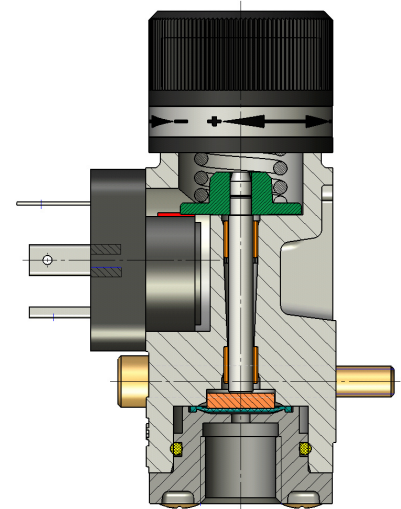
The built-in micro switch is used to change the circuit.

The ADS Pressure Switch is intended for use in environmental media of aggressive fluids and gases up to maximum pressure of 20bar. All fluid-wetted parts/components are made out of stainless steel 1.4305 (V2A) or 1.4404 (V4A) respectively out of modified PTFE Type HS 22121.

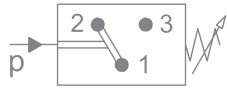
For specific applications we recommend to test the medium compatibility of the ADS.

Corresponding to the application the ADS is equipped with the electrical connection DIN 43650 Type A or M12x1.

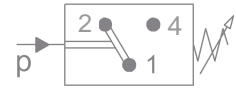
Sockets with or without LEDs can be supplied as accessories.



DIN 43650:



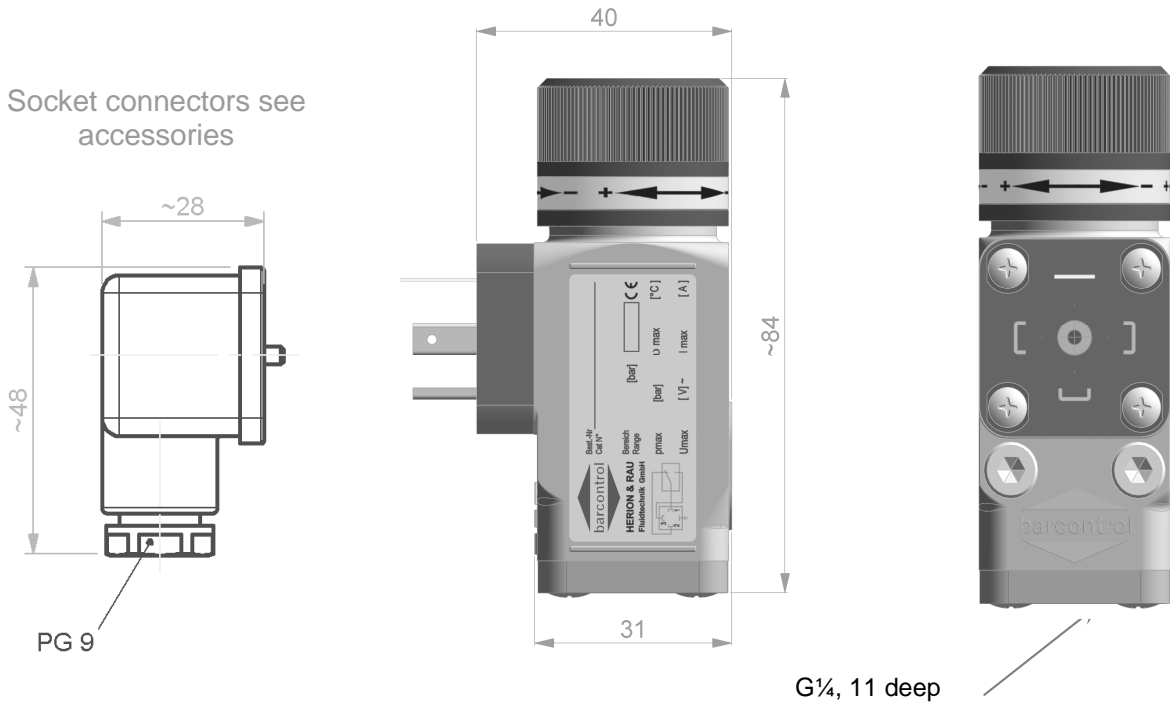
M12x1:



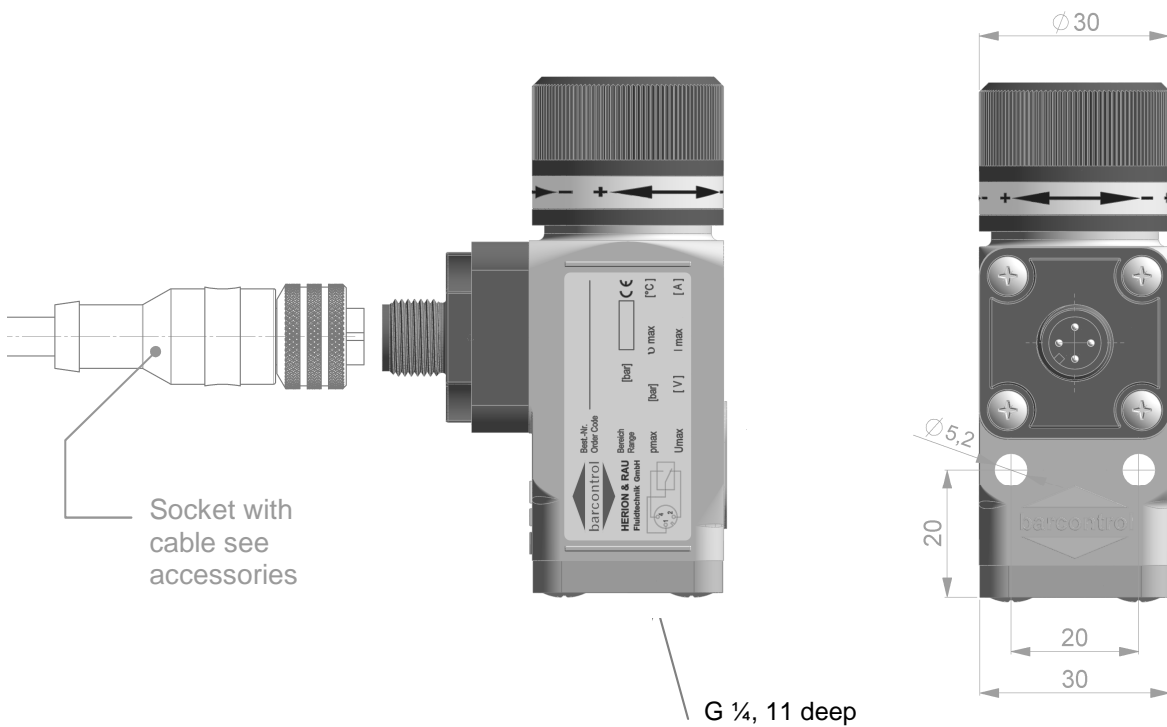
Technical Data

Operating fluids:	neutral fluids and aggressive fluids
Mounting holes:	2 through-holes, Ø5,2mm
Fluid connection:	G1/4" inner pipe thread
Mounting position:	optional
Operating pressure range:	0.2...2 bar 0.5...8 bar 1...16 bar (max. system pressure 20 bar)
Repeatability:	±2% of operating range maximum value
Switching pressure difference:	see Diagram Switching pressure difference page 4
Max. switching frequency:	100/min
Temperature range:	-10°C to +80°C
Vibration resistance:	10g (10 ... 2000Hz)
Shock resistance:	30g
Electrical connection:	sockets acc. to DIN 43650, Form A (EN175301-803, ISO4400); M12x1
Switching element:	Spring-snap switcher with self-cleaning contacts
Operating voltage at	AC12: VDE0660 (EN60947): 4A at 250 VAC
Operating category:	AC14: VDE0660 (EN60947): 1A at 250 VAC DC12: VDE0660 (EN60947): 3A at 28 VDC DC14: VDE0660 (EN60947): 1A at 28 VDC
CE-Certification:	acc to EU-Standard 73/23/EWG
Degree of protection EN 60529:	DIN 43650: IP65; M12x1: IP67
Material:	fluid-wetted parts: stainless steel 1.4305 or 1.4404, diaphragm: PTFE housing: zinc die-cast, adjustment knob: Aluminium, powder-coated
Weight:	0,310 kg

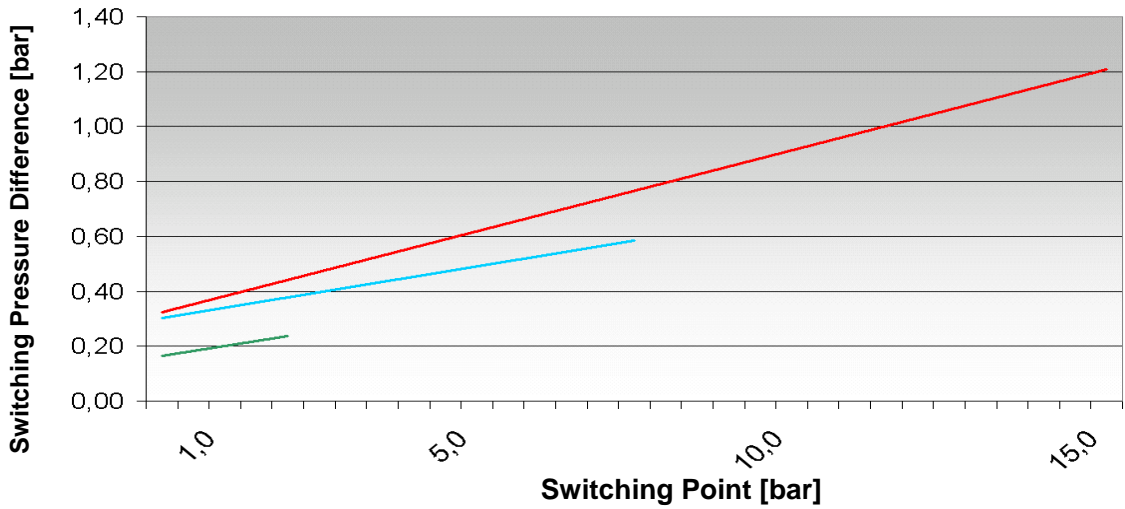
Fluid connection G $\frac{1}{4}$, Electric Connection DIN 43650 Type A



Fluid connection G $\frac{1}{4}$, Electric Connection M12x1



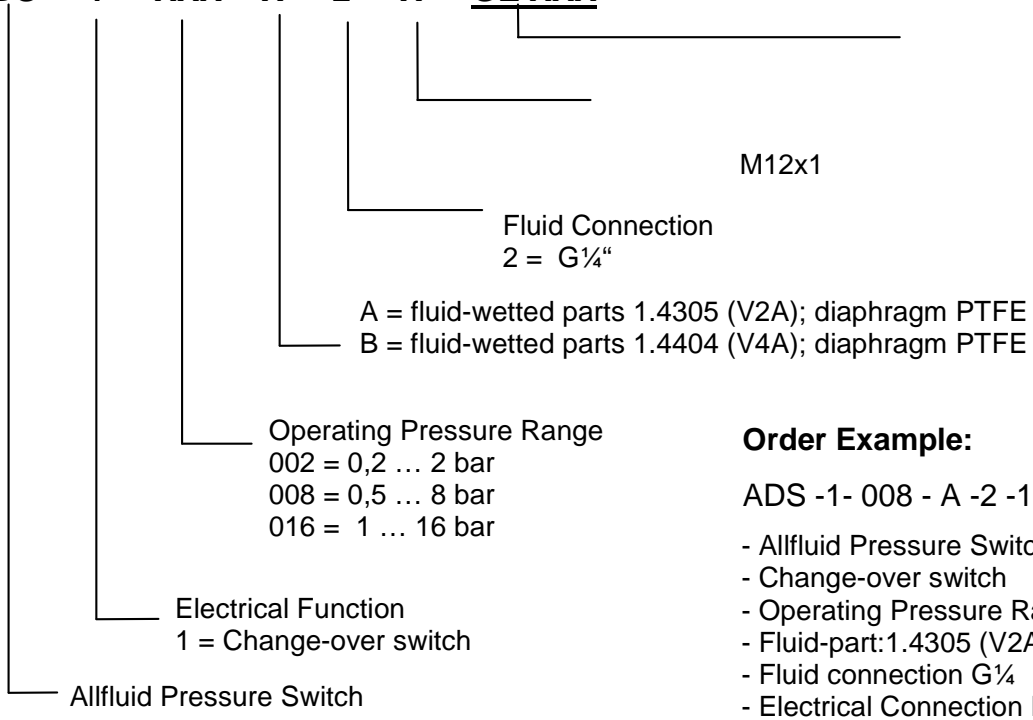
Switching Pressure Difference



ADS 016

Order Code

ADS - 1 - XXX - X - 2 - X - GE XXX



M12x1

Order Example:

- ADS -1- 008 - A -2 -1
- Allfluid Pressure Switch
 - Change-over switch
 - Operating Pressure Range: 0.5 ... 8 bar
 - Fluid-part: 1.4305 (V2A) with PTFE-diaphragm
 - Fluid connection G $\frac{1}{4}$
 - Electrical Connection DIN 43650, Type A

Standard-Socket DIN 43650 Type A, ISO 4400
 Standard-Socket DIN 43650 with 2 integrated LEDs 28V
 Socket with cable (L=1,5m), 4-pole, straight, for M12x1

Part Number. 11 000
 Part Number. 11 001
 Part Number. 11 041

Specifications are subject to change without notice.