

## 2/2 Way Valve, Direct Operated

# Model : WV121S Series



Brass body with S coil



StSt body with S coil



Brass body with H coil



StSt body with H coil



Plastic body with S coil

### Features

- Normally closed
- Body : Brass, StSt 303, Plastic
- Coil : S or H
- Operated on Zero MOPD
- Air, Water Inert gas, Oil, Corrosive fluid applicapable
- Applied Seal : FKM, NBR, Silicon
- A miniature, High Performance
- UL/CE approved for 'S' coil
- Body thread type : NPT, PF available with factory consult

### Specifications

- Body - Brass, StSt 303
- Seal - FKM and NBR with factory consult
- Sleeve - StSt 303, 7000
- Coil - Refer the Electrical part table on the last page
- Long life cycle (1 Million)
- Manifold configurations
- Standard FKM seal
- UL & CE components recognized

### Valve body numbering

Valve Body	Port & Body	Orifice Size (mm)	Flow Factor (Kv)	Maximum Operating Pressure(kgf/cm <sup>2</sup> )		Fluid Temp °C
				DC	AC	
WW121S221GV	1/8 inch, PT, Brass	1.6	1.3	10	15	75
WW121S221JV		2.0	1.9	7	10	75
WW121S221LV		2.5	2.8	5	7	75
WW121S221NV		3.0	3.2	4	5	75
WW121S221QV		4.0	3.5	2	4	75
WW121S222GV	1/4 inch, PT, Brass	1.6	1.3	10	15	75
WW121S222JV		2.0	1.9	7	10	75
WW121S222LV		2.5	2.8	5	7	75
WW121S222NV		3.0	3.2	4	5	75
WW121S222QV		4.0	3.5	2	4	75
WW121S121GV	1/8 inch, PT, St steel	1.6	1.3	10	15	75
WW121S121JV		2.0	1.9	7	10	75
WW121S121LV		2.5	2.8	5	7	75
WW121S121NV		3.0	3.2	4	5	75
WW121S121QV		4.0	3.5	2	4	75
WW121S122GV	1/4 inch, PT, St Steel	1.6	1.3	10	15	75
WW121S122JV		2.0	1.9	7	10	75
WW121S122LV		2.5	2.8	5	7	75
WW121S122NV		3.0	3.2	4	5	75
WW121S122QV		4.0	3.5	2	4	75
121S432KS	1/4 Inch, NPT, Plastic	2.5	2.8	5	7	75

### Coil numbering

You can add following coil number to valve body part number

- 1) I-1S Coil : 5 different voltage available  
 I-1S-PO : AC24V/50-60 (5W)  
 I-1S-P3 : AC110/50, AC120/60 (5W)  
 I-1S-Q3 : AC220/50, AC240/60 (5.5W)  
 I-1S-C1 : DC12V (6W)  
 I-1S-C2 : DC24V (6W)
- 2) H-WS Coil : 4 different voltage available  
 H-WS-B5 : AC110/60 (8W)  
 H-WS-B7 : AC220/60 (8W)  
 H-WS-C1 : DC12V (9W)  
 H-WS-C2 : DC24V (9W)

### Ordering example

If you want brass body, 1/8 inch pipe size with PT connection, I coil with AC240V/50Hz, then, you can order as follows.

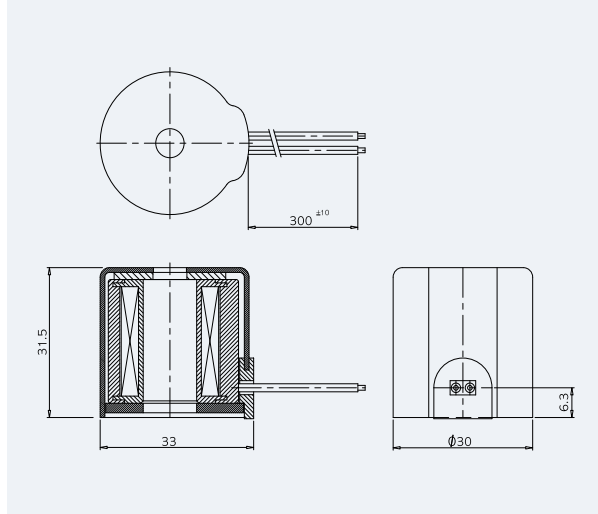
Factory consult need for NPT, PF thread

**"WV121S221LV I-1S-Q3"**

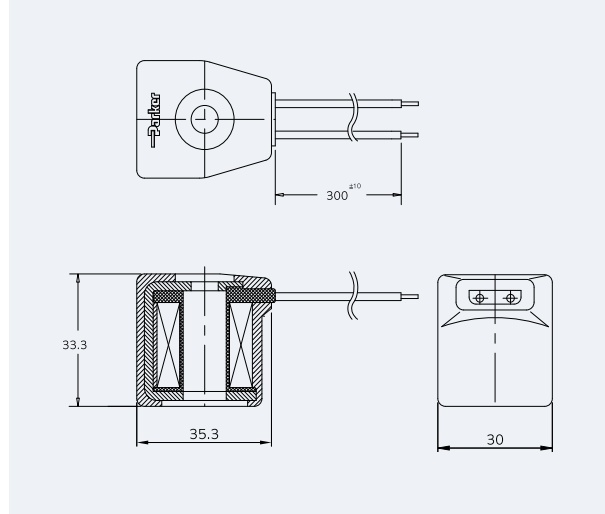
# Drawing

(Unit : mm)

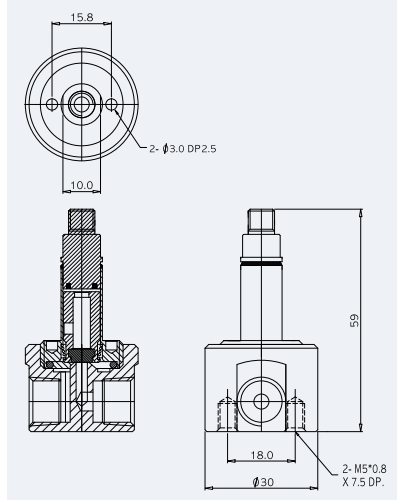
## H-WS Coil Assembly



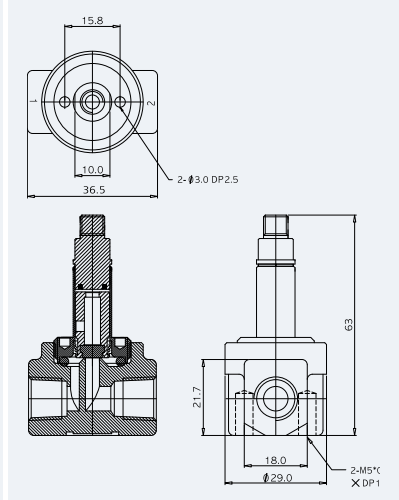
## I-1S Coil Assembly



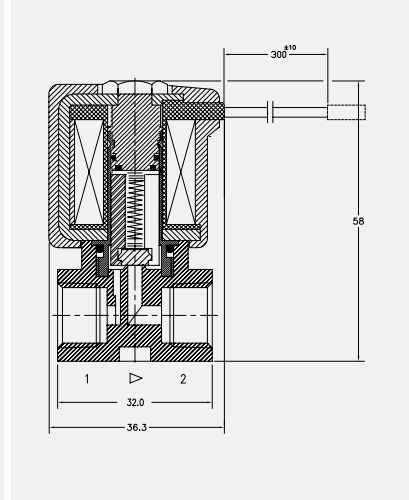
## St. steel 303 Body Assembly



## Brass Body Assembly



## Plastic Body Assembly



## 3/2 Way Direct Operated

# Model : WV131S Series



Brass body with S coil



StSt body with S coil

### Features

- Normally Closed
- Body : Brass, StSt 303
- Coil : S or H
- Operated on Zero MOPD
- Air, Water Inert gas, Oil, Corrosive fluid applicable
- Applied Seal : FKM, NBR
- A miniature, High Performance
- UL/CE approved for 'S' coil
- Body thread type : NPT, PF available with factory consult

### Specifications

- Body -Brass, StSt 303
- Seal -FKM and NBR with factory consult
- Sleeve -StSt 303, 7000
- Coil -Refer the Electrical part table on the last page

### Response Time

- 25 to 40 milliseconds

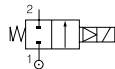
### Duty Cycle

- Continuous Duty

### Mounting

- For direct pipe mounting or 2-M 5 \* 0.8 mm screws

Normally Closed



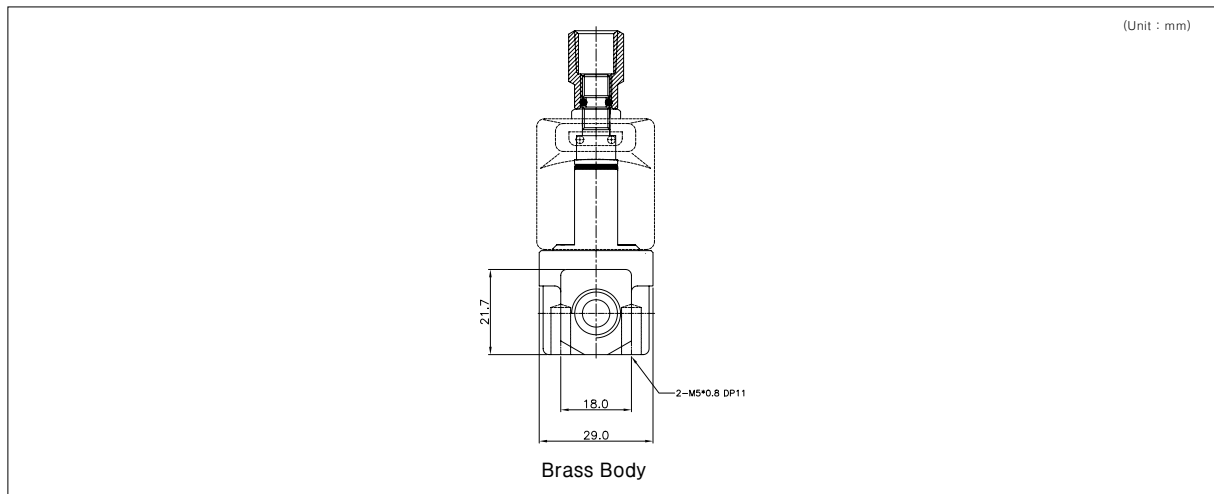
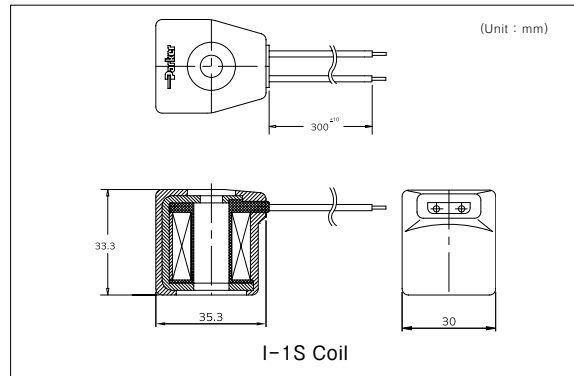
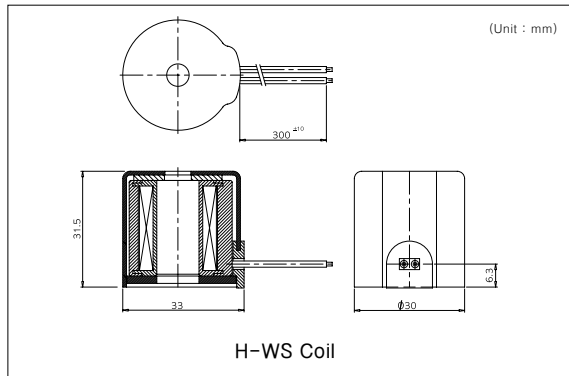
VESSEL MODEL NUMBER	COIL & HOUSING	Pipe Size	Body Kv Factor	Sleeve Orifice Size (mm)	Body Orifice Size (mm)	Maximum Operating Pressure(Kgf/cm <sup>2</sup> )		Seal disc	Fluid Temp.
						DC	AC		
WV131S222GV	I-1S-XX	PT 1/4	1.3	1.6	1.6	6	6	FKM	75
	H-WS-XX								
WV131S222JV	I-1S-XX		1.9	1.6	2.0	4.5	4.5	FKM	75
	H-WS-XX								
WV131S222LV	I-1S-XX		2.8	1.6	2.5	3	3	FKM	75
	H-WS-XX								

\* Connection Thread type : Available NPT, PT. Need consultation

\* Pipe size : 1/8" available, need consultation

\* StSt 303 body available with factory consult

## Drawing



## WV121/131 Series Numbering system

1		2		3		4	5		6		7		8		9		10	11			
Actuation		Functional Type		Flow Pattern		Family (Series)	Body Material		Connection		Pipe Size		Orifice code		Seal Material		Coil type	Voltage/Hz			
1	Direct	2	2-way	1	N.C	S	1	SUS303	1	PF	1	1/8"	G	1.6mm	N	NBR	I-1S	P0	AC24/50-60		
			3-way		N.O			2		Brass								2	PT	2	1/4"
		3	MULTI	3	MULTI	9	Pressure out the sleeve	3	NPT	3	NPT	3	1/4"	L	2.5mm	V		VITON (FKM)	C1	DC12V	
																				9	Pressure out the sleeve
		9	Pressure out the sleeve	3	NPT	3	1/4"	Q	4.0mm	C	CR	C2	DC24V								
													9	Pressure out the sleeve	3	NPT		3	1/4"	Q	4.0mm
		9	Pressure out the sleeve	3	NPT	3	1/4"	Q	4.0mm	C	CR	C2									
													9	Pressure out the sleeve	3	NPT		3	1/4"	Q	4.0mm
		9	Pressure out the sleeve	3	NPT	3	1/4"	Q	4.0mm	C	CR	C2									
													9	Pressure out the sleeve	3	NPT		3	1/4"	Q	4.0mm
9	Pressure out the sleeve	3	NPT	3	1/4"	Q	4.0mm	C	CR	C2	DC24V										
											9	Pressure out the sleeve	3	NPT	3	1/4"	Q	4.0mm	C	CR	C2
9	Pressure out the sleeve	3	NPT	3	1/4"	Q	4.0mm	C	CR	C2											