

Solenoid Valves for Automation

2/2Way Magnalift

Model : 221G Series



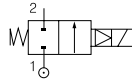
Features

- Normally closed
- Body : Brass
- 7000 sleeve assembled
- Coil : All of 7000 sleeve coil available
- Operated on nearly Zero MOPD
- Air, Water, Inert gas, Oil and Steam applicapable
- Applied Seal : FKM, NBR, EPDM
- Body thread type : NPT, PT available with factory consult

Application

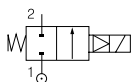
- Thermohydraulic system • Autoclaves
- Oil burner, Bolier • Molding machines
- Steam generators • Sterilisation system
- Industrial washing machines
- Washing system • Boiling system
- Cooling of machine tools • Hospital equipment

Normally Closed, Water, Air, Gas, light oil



REFERENCE NO.				PORT SIZE (PF) G Thread	ORIFICE (mm)	FLOW (L / min)			ADMISSIBLE DIFF. PRESSURE (BAR)			MAX. FLUID TEMP.(°C)			SEAL	Power (W)		
VESSEL NO.	HOUSING	COIL				Liquids kv	Gases Qmax	Gases Qn	Min	Max		Gas	Liquids	Oil		DC	AC	
		Gobal	Korea							DC	AC							
221G13	I	-	1K	3/8"	15	65	65	4500	0	-	16	100	75	100	NBR	14	10	
	2995	481865	-							-	16	100	75	100		9	8	
	4270	481000	-							-	16	100	75	100		8	8	
	4270	486265	-							-	7	-	100	75		100	14	14
	H	-	1F							-	16	100	75	100		8	8	
	H	-	1H							-	7	-	100	75		100	14	14
221G23	I	-	1K	3/8"	15	65	65	4500	0	-	16	100	-	100	FKM	14	10	
	2995	481865	-							-	16	100	-	100		9	8	
	4270	481000	-							-	16	120	-	120		8	8	
	4270	486265	-							-	7	20	120	-		140	14	10
	H	-	1F							-	16	120	-	120		8	8	
	H	-	1H							-	7	20	120	-		140	14	10
221G15	I	-	1K	1/2"	15	65	65	4500	0	-	16	100	75	100	NBR	14	10	
	2995	481865	-							-	16	100	75	100		9	8	
	4270	481000	-							-	16	100	75	100		8	8	
	4270	486265	-							-	7	-	100	75		100	14	14
	H	-	1F							-	16	100	75	100		8	8	
	H	-	1H							-	7	-	100	75		100	14	14
221G25	I	-	1K	1/2"	15	65	65	4500	0	-	16	100	-	100	FKM	14	10	
	2995	481865	-							-	16	100	-	100		9	8	
	4270	481000	-							-	16	120	-	120		8	8	
	4270	486265	-							-	7	20	120	-		140	14	10
	H	-	1F							-	16	120	-	120		8	8	
	H	-	1H							-	7	20	120	-		140	14	10
221G16	I	-	1K	3/4"	15	80	80	6000	0	-	16	100	75	100	NBR	14	10	
	2995	481865	-							-	16	100	75	100		9	8	
	4270	481000	-							-	16	100	75	100		8	8	
	4270	486265	-							-	7	-	100	75		100	14	14
	H	-	1F							-	16	100	75	100		8	8	
	H	-	1H							-	7	-	100	75		100	14	14
221G26	I	-	1K	3/4"	15	80	80	6000	0	-	16	100	-	100	FKM	14	10	
	2995	481865	-							-	16	100	-	100		9	8	
	4270	481000	-							-	16	120	-	120		8	8	
	4270	486265	-							-	7	20	120	-		140	14	10
	H	-	1F							-	16	120	-	120		8	8	
	H	-	1H							-	7	20	120	-		140	14	10
221G17	I	-	1K	1"	15	80	80	6000	0	-	16	100	75	100	NBR	14	10	
	2995	481865	-							-	16	100	75	100		9	8	
	4270	481000	-							-	16	100	75	100		8	8	
	4270	486265	-							-	7	-	100	75		100	14	14
	H	-	1F							-	16	100	75	100		8	8	
	H	-	1H							-	7	-	100	75		100	14	14
221G27	I	-	1K	1"	15	80	80	6000	0	-	16	100	-	100	FKM	14	10	
	2995	481865	-							-	16	100	-	100		9	8	
	4270	481000	-							-	16	120	-	120		8	8	
	4270	486265	-							-	7	20	120	-		140	14	10
	H	-	1F							-	16	120	-	120		8	8	
	H	-	1H							-	7	20	120	-		140	14	10

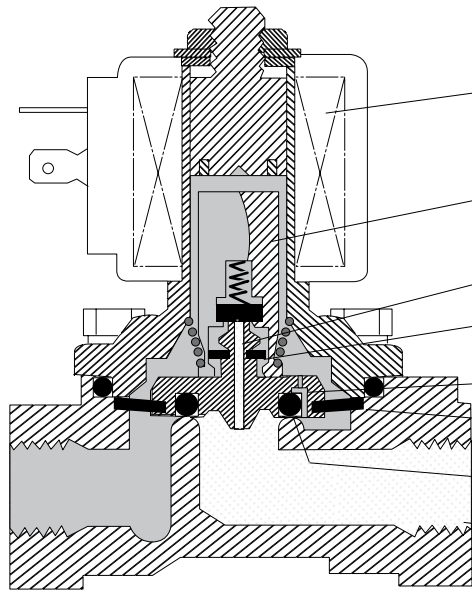
Normally Closed, Steam application



REFERENCE NO.				PORT SIZE (PF) G Thread	ORIFICE (mm)	FLOW (L/min)			ADMISSIBLE DIFF. PRESSURE (BAR)			MAX. FLUID TEMP.(°C)		SEAL	Power (W)	
VESSEL NO.	HOUSING	COIL				Liquids kv	Gases Qmax	Qn	Min	Max		WATER	STEAM		DC	AC
		Gobal	Korea							DC	AC					
221G1303	I	-	1K	3/8"	15	65	65	4500	0	-	10	100	-	EPDM	14	10
	2995	481865	481865							-	10	100	-		9	8
	4270	481000	1F							-	10	120	-		8	8
	4270	486265	-							7	10	120	-		14	14
	4270	486265	-							4	4	-	140		14	14
	H	-	1H							7	10	120	-		14	14
	H	-	1H							4	4	-	140		14	14
221G1503	I	-	1K	1/2"	15	65	65	4500	0	-	10	100	-	EPDM	14	10
	2995	481865	481865							-	10	100	-		9	8
	4270	481000	1F							-	10	120	-		8	8
	4270	486265	-							7	10	120	-		14	14
	4270	486265	-							4	4	-	140		14	14
	H	-	1H							7	10	120	-		14	14
	H	-	1H							4	4	-	140		14	14
221G1603	I	-	1K	3/4"	15	80	80	6000	0	-	10	100	-	EPDM	14	10
	2995	481865	481865							-	10	100	-		9	8
	4270	481000	1F							-	10	120	-		8	8
	4270	486265	-							7	10	120	-		14	14
	4270	486265	-							4	4	-	140		14	14
	H	-	1H							7	10	120	-		14	14
	H	-	1H							4	4	-	140		14	14
221G1703	I	-	1K	1"	15	80	80	6000	0	-	10	100	-	EPDM	14	10
	2995	481865	481865							-	10	100	-		9	8
	4270	481000	1F							-	10	120	-		8	8
	4270	486265	-							7	10	120	-		14	14
	4270	486265	-							4	4	-	140		14	14
	H	-	1H							7	10	120	-		14	14
	H	-	1H							4	4	-	140		14	14

*Port type : Available NPT, PT . Need consultation

VALVE SECTION



- Class F coil or Class H coil for all voltage
- High performed plunger to remain low magnetism and rise the life cycle.
- Exhaust orifice of pilot chamfer
- Operating in condition of zero differential pressure by mechanical connection of diaphragm and plunger
- Inflow orifice of pilot chamfer (221G TYPE)
- Diaphragm is seperated from pilot chamfer
- Seal
- Valve connection hole

Modle	Dimension							
	A	B	C	D	E	F	G	H
221G 3/8"	75	93	37,5	15	34	27	10	-
221G 1/2"	75	93	37,5	15	34	27	15	-
221G 3/4"	80	95,5	40	17,5	34	32	20	53
221G 1"	85	102,5	42,5	22,5	46	41	25	53

Dimensions

