

Solenoid valves for actuator control

3/2 5/2

Applications

3- or 4-way directional valves for control of single - or double acting pneumatic actuators.

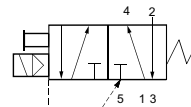
A patented sealing plate is incorporated to the body - providing on-site conversion of the valve from 5/2 to the 3/2 function (or vice versa) by simply rotating the plate through 180°. In the 3/2 function it provides venting of spring chambers to prevent corrosion which normally occurs when environmental air penetrates into the actuator.

The interface design corresponds to the German NAMUR standard and the VDI/VDE 3845 recommendations of the actuator industry and permits a compact design of the actuator/valve unit.



Port size	Orifice (mm)	Flow factors (L/min)	Admissible differential pressure bar		Fluid temp. °C		Seat disc	Reference numbers			Power consumption (W)		Wt. (g)	El. Part Group *	Dim ref.
			Min	Max	Min	Max		Global valve reference	Valve reference no.	Housing	Coil	DC			
G		Qn													

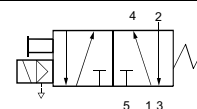
Pilot operated - Integrated pilot



Anod. aluminium body/NAMUR interface - Spool design

1/4 - 1/8	4	600	2	10	10	-25	80	NBR	2341NAKBJNM1	341N01	1	8993	488980	2.5	2	320	1	209
	4	600	2	10	10	-25	80	NBR	2341NAKBJNMO	341N11		8993	488980	2.5	2	320	1	208

Pilot operated



Anod. aluminium body/NAMUR interface - Spool design

1/4 - 1/8	4	600	2	10	10	-25	80	NBR	7341NAKBJNM1	341N21		2995	481865	9	8	390	2	210
	4	600	2	10	10	-25	80	NBR				4270	481000	8	8	500	2	

Table continued on page 260

Notes:

* See Electrical Parts Group table at end of section

1. Manual override standard

Solenoid valves for actuator control - 3/2 or 5/2 valves - NAMUR interface-Spool design

Dimension reference 208

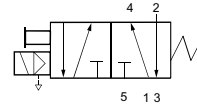
Dimension reference 209

Dimension reference 210

Solenoid valves for actuator control - 3/2 or 5/2 valves - NAMUR interface-Spool design

Port size	Orifice (mm)	Flow factors (L/min)	Admissible differential pressure bar			Fluid temp. °C		Seat disc	Reference numbers				Power consumption (W)		Wt. (g)	El. Part Group *	Dim ref.
			Min	Max	DC	AC	Min		Max	Global valve reference	Valve reference no.	Housing	Coil	DC			
G		Qn															

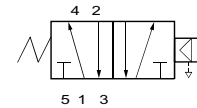
Pilot operated



Anod. aluminium body/NAMUR interface - Spool design

1/4	8	1400	2	10	10	-25	80	NBR	7341NAKBPNM0	341N32	2995	481865	9	8	740	2	223
	8	1400	2	10	10	-25	80	NBR			4270	481000	8	8	850	2	
	8	1400	2	10	-	-25	80	FKM	7341NAKBPNL2	341N3280	2995	482740	1.6	-	740	6	223
	8	1400	2	10	-	-25	80	FKM			-	491117	2.5	-	740	6	

Pilot operated



Anod. aluminium body/NAMUR interface - Spool design

1/4	8	1400	2	10	-	-25	80	NBR	7341NAKBPN90	341N3290	-	483580.01 ¹	0.4	-	850	7	223
	8	1400	2	10	10	-25	80	NBR	7341NAKBPN1D	341N32001D	-	483250	8	8	1730	5	7754

Table continued on page 268

Notes:

* See Electrical Parts Group table at end of section

1. Other coil-housing available: 488650.01, 488660.01, 4888670.01 (refer to electrical parts at end of this section)

Solenoid valves for actuator control - 3/2 or 5/2 valves - NAMUR interface-Spool design

