



**SPECIFICATION:**

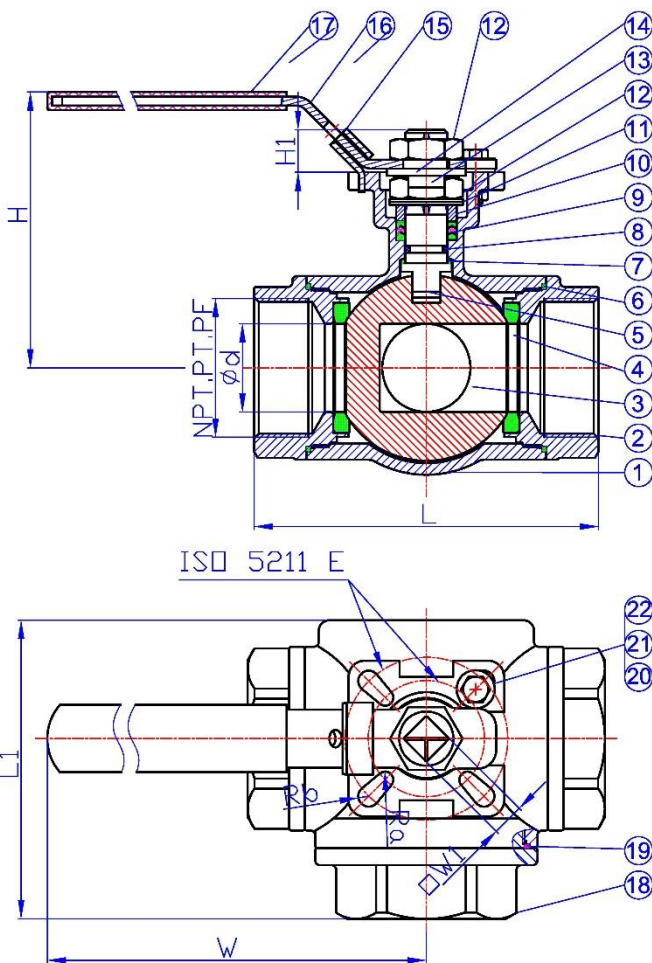
- 3-way standard port
- Available L-port or T-port with 360° turning
- Investment casting body A351 Gr-CF8M
- Blow-out-proof stem
- ISO 5211 DIN3337 direct mounting pad
- Working pressure up to 1000psi W.O.G
- Working temperature up to 180° C

**PRESSURE TEST**

| BODY                   | SEAT                  |                      |
|------------------------|-----------------------|----------------------|
| by water               | by water              | by air               |
| 105 kg/cm <sup>2</sup> | 80 kg/cm <sup>2</sup> | 6 kg/cm <sup>2</sup> |

**MATERIAL LIST**

| NO. | PART NAME         | MATERIAL   |
|-----|-------------------|------------|
| 1   | Body              | CF8M       |
| 2   | Cap               | CF8M       |
| 3   | Ball              | CF8M       |
| 4   | Seat              | R-PTFE     |
| 5   | Stem              | SUS316     |
| 6   | Gasket            | PTFE       |
| 7   | Thrust washer     | 15% R+PTFE |
| 8   | O-ring            | VITON      |
| 9   | Packing           | PTFE       |
| 10  | Gland             | SUS304     |
| 11  | Spring washer     | SUS304     |
| 12  | Stem nut          | SUS304     |
| 13  | Belleville washer | SUS304     |
| 14  | Handle washer     | SUS304     |
| 15  | Locking device    | SUS304     |
| 16  | Handle            | SUS304     |
| 17  | Handle sleeve     | PLASTIC    |
| 18  | Cap               | CF8M       |
| 19  | Gasket            | PTFE       |
| 20  | Stopper pin       | SUS304     |
| 21  | Bolt              | SUS304     |
| 22  | Nut               | SUS304     |



**DIMENSIONS**

| SIZE  |      | L   | L1   | H   | W   | H1 | W1    | Ø E   | ISO5211 | ISO5211       |               |
|-------|------|-----|------|-----|-----|----|-------|-------|---------|---------------|---------------|
| G     | d    |     |      |     |     |    |       |       |         | DOUBLE ACTING | SPRING RETURN |
| 1/4   | 11.6 | 76  | 58.5 | 73  | 123 | 9  | 9x9   | 36-42 | F03-F04 | AD50          | AS65          |
| 3/8   | 12.5 | 76  | 58.5 | 73  | 123 | 9  | 9x9   | 36-42 | F03-F04 | AD50          | AS65          |
| 1/2   | 12.5 | 76  | 58.5 | 73  | 123 | 9  | 9x9   | 36-42 | F03-F04 | AD50          | AS65          |
| 3/4   | 16   | 86  | 72   | 76  | 123 | 9  | 9x9   | 36-42 | F03-F04 | AD50          | AS65          |
| 1     | 20   | 99  | 81.5 | 87  | 153 | 11 | 11x11 | 42-50 | F04-F05 | AD50          | AS65          |
| 1-1/4 | 25   | 117 | 94.5 | 93  | 153 | 11 | 11x11 | 42-50 | F04-F05 | AD65          | AS80          |
| 1-1/2 | 32   | 124 | 104  | 110 | 183 | 14 | 14x14 | 50-70 | F05-F07 | AD65          | AS80          |
| 2     | 38   | 148 | 125  | 119 | 183 | 14 | 14x14 | 50-70 | F05-F07 | AD65          | AS80          |

The specification and dimensions are subject to change without prior notice!