

H2500

Stainless steel
angle seat valve
long service fast response



**New!
Improved!**

Application

Applicable Industries:

Beer, Washing, Disinfection & High temperature killing bacteria, Rubber machinery, Textile printing and dyeing, Pharmacy and medical equipment, Foodstuff processing, Water/ sewage disposal, Filling equipment.

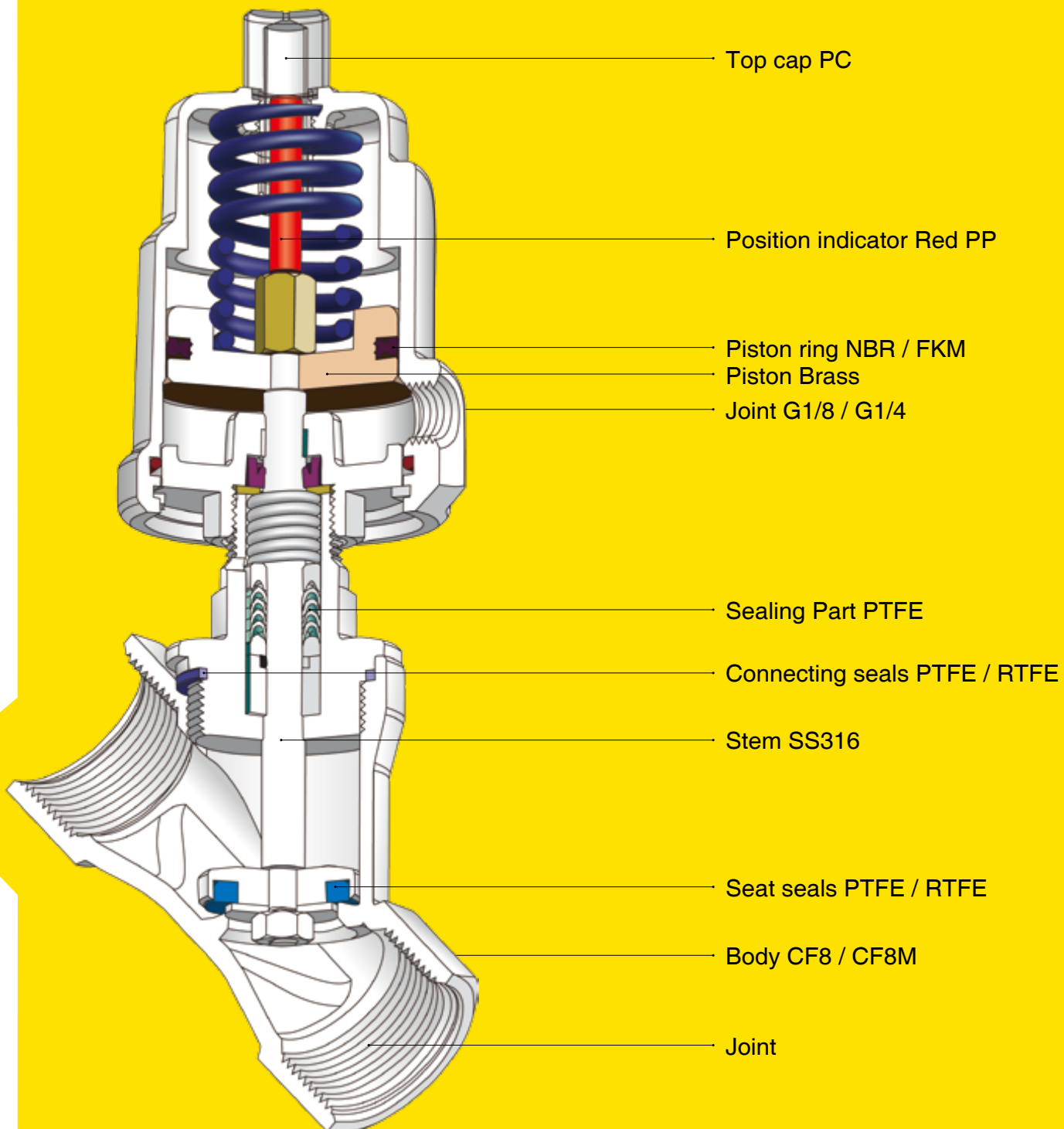
Applicable Medium:

water, liquid, neutral gas, water steam, slight corrosive gas and liquid.

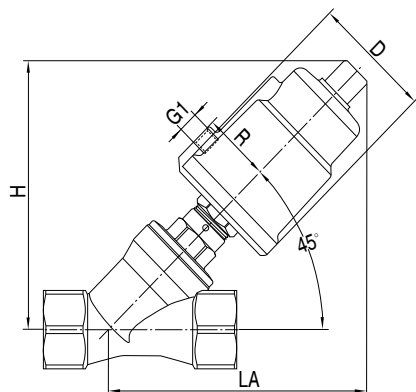
Technical Data

Joint size:	DN10-DN65
Thread:	BSP, BSPT.NPT, NPTF
Welded:	ISO1127/4200, DIN11850.1, DIN11850.2 DIN11850.3, SMS3008, ASME BPE
Valve body:	CF8/CF8M
Actuator:	CF8
Seat seals:	PTFE/RTFE
Stem seals:	PTFE/FKM
Piston seals:	FKM/NBR
Applicable medium:	Water, liquid, neutral gas, Water steam, Slight corrosive gas and liquid
Temperature range:	-10°C to +180°C
Ambient temperature:	-10°C to +60°C
Viscosity:	max 600mm ² /s
Installation:	Any position
Controlling medium:	Air or neutral gas
Controlling pressure range:	0.3-1Mpa

H2500



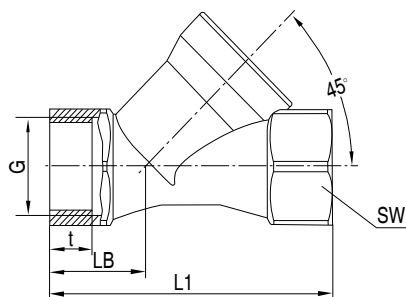
Installation Dimensions



Installation size (mm)

Size	Actuator	D	R	G1	H/LA		
					Thread	ISO1127/4200	DIN11850
DN10	40	50.5	27	G1/8	109	110	110
	50	62	34	G1/8	121	122	122
DN15	40	50.5	27	G1/8	109	109	109
	50	62	34	G1/8	121	121	121
DN20	50	62	34	G1/8	125	125	125
DN25	50	62	34	G1/8	131	131	131
	63	77	41.5	G1/8	153	153	153
DN32	63	77	41.5	G1/8	161	161	161
	80	98	52	G1/4	178	178	178
DN40	63	77	41.5	G1/8	169	169	169
	80	98	52	G1/4	185	185	185
	100	121	63	G1/4	203	203	203
DN50	63	77	41.5	G1/8	180	180	180
	80	98	52	G1/4	195	195	195
	100	121	63	G1/4	213	213	213
DN65	80	98	52	G1/4	220	220	220
	100	121	63	G1/4	237	237	237

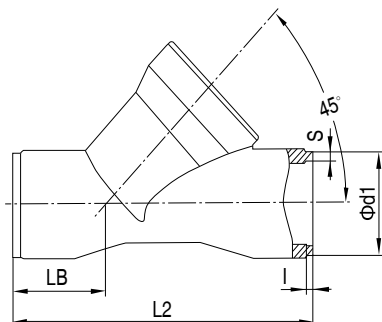
Valve Body Size



Body size-Thread (mm)

DN	L1	LB	SW		G	BSP	NPT	NPTF	BSPT
			t	t		t	t		
10	74	25.5	22	6-kt	3/8"	10	10.6	11.7	10.1
15	74	25.5	25	6-kt	1/2"	11.5	13.8	15.4	13.2
20	84	29	31	6-kt	3/4"	14	14.3	15.9	14.5
25	100	33.5	39	6-kt	1"	15	17	19	16.8
32	112	36	50	8-kt	1-1/4"	18	17.5	19.5	19.1
40	126	41	56	8-kt	1-1/2"	18	17.5	19.5	19.1
50	146	46	68	8-kt	2"	22	18	19.9	23.4
65	196	61	85	8-kt	2-1/2"	25	24	30	26.7

Body size-Welded (mm)

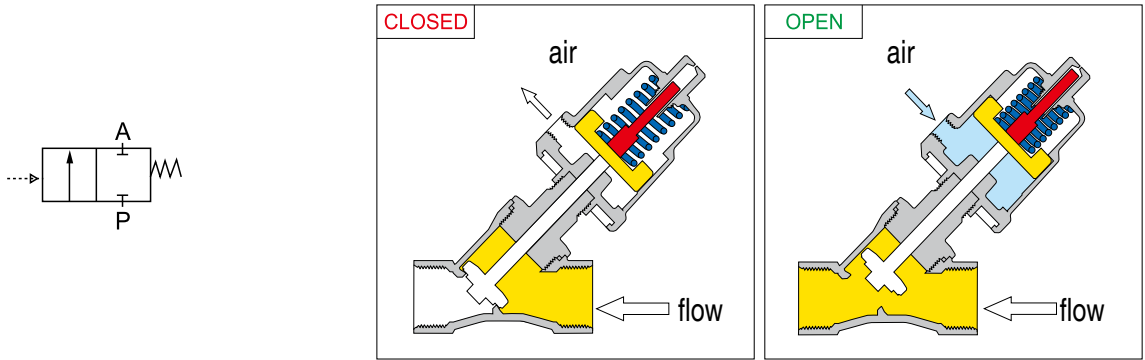


DN	L2	LB	ISO1127/4200			DIN11850.1			DIN11850.2			DIN11850.3		
			l	φd1	S	l	φd1	S	l	φd1	S	l	φd1	S
10	70	22	2	17.2	1.6	2	12	1	2	13	1.5	2	14	2
15	88	30	2	21.3	1.6	2	18	1	2	19	1.5	2	20	2
20	92	30	2.5	26.9	1.6	2.5	22	1	2.5	23	1.5	2.5	24	2
25	110	35	3	33.7	2	3	28	1	3	29	1.5	3	30	2
32	126	39	3	42.4	2	3	34	1	3	35	1.5	3	36	2
40	144	46	3	48.3	2	3	40	1	3	41	1.5	3	42	2
50	166	48	3	60.3	2	3	52	1	3	53	1.5	3	54	2
65	208	60	3	76.1	2	-	-	-	3	70	2	-	-	-

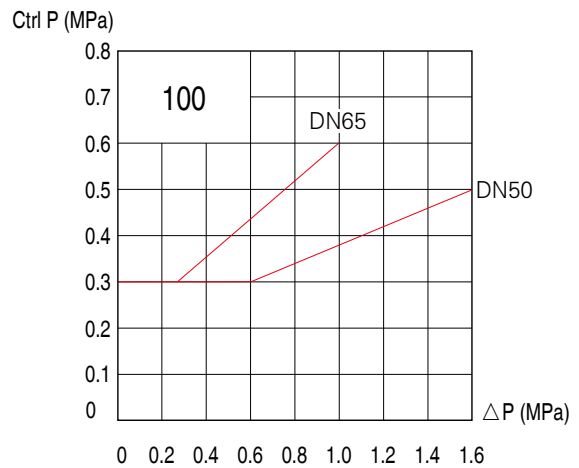
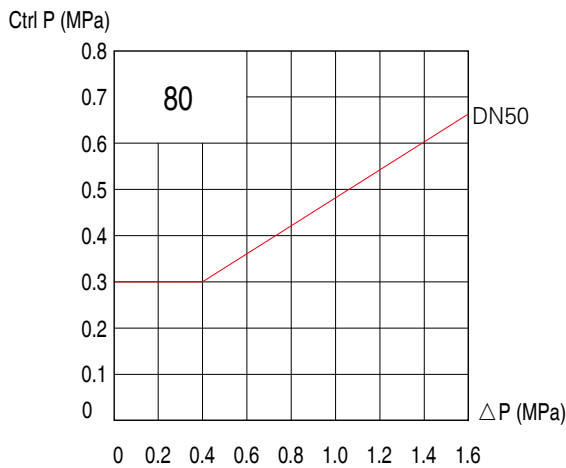
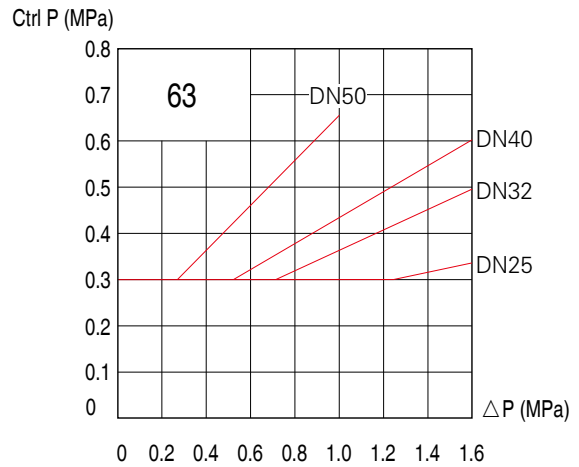
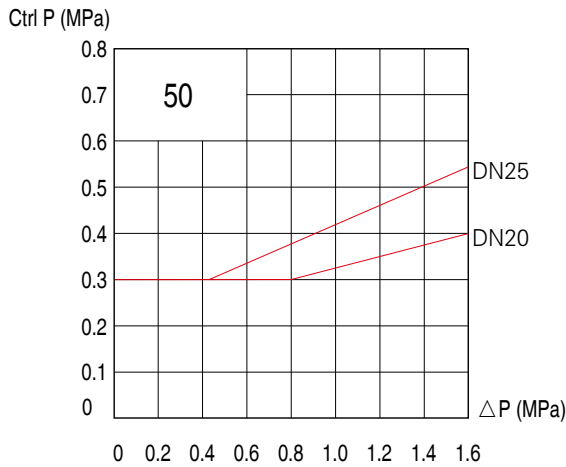
		SMS 3008			ASME BPE			The technical data is the same with below sizes of any other welded standard			
DN	L2	LB	l	φd1	s	l	φd1	s			
15	70	22	2.5	12	1	2.5	12.7	1.65	DN10		
20	88	30	2	18	1	2	19.05	1.65	DN15		
25	92	30	2.5	25	1.2	2.5	25.4	1.65	DN20		
40	126	39	3	38	1.2	3	38.1	1.65	DN32		
50	144	46	3	51	1.2	3	50.8	1.65	DN40		
65	166	48	3	63.5	1.6	3	63.5	1.65	DN50		
80	208	60	3	76.1	1.6	3	76.2	1.65	DN65		

H2500 Spring return normal close (Normal type)

Normal close with flow direction

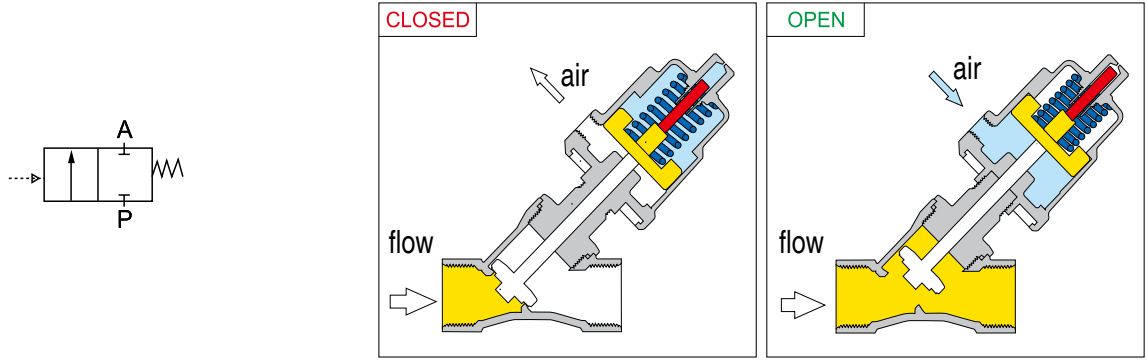


Size	End	Orifice (mm)	Actuator (mm)	Kv (m ³ /h)	Max working pressure at 180°C (Mpa)	Pressure range (Mpa)	Min control pressure (Mpa)
DN10	3/8"	13	40	4.7	1.6	0-1.6	≥ 0.4
			50	4.7		0-1.6	≥ 0.3
DN15	1/2"	13	40	4.7		0-1.6	≥ 0.4
			50	4.7		0-1.6	≥ 0.3
DN20	3/4"	18	50	9.5		0-1.6	0.3-0.4
DN25	1"	24	50	18.1		0-1.6	0.3-0.55
			63	18.1		0-1.6	0.3-0.35
DN32	1-1/4"	31	63	23.1		0-1.6	0.3-0.5
DN40	1-1/2"	35	63	32.9		0-1.6	0.3-0.6
			63	52.8		0-1.0	0.3-0.65
			80	52.8		0-1.6	0.3-0.66
DN50	2"	45	100	52.8		0-1.6	0.3-0.5
			100	82	0-1.0	0.3-0.6	



H2500 Spring return normal close (Anti-water hammer)

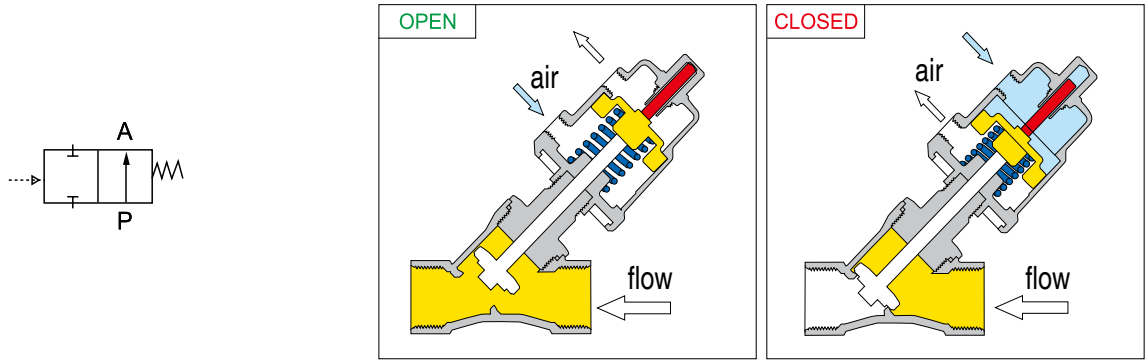
Normal close against flow direction



Size	End	Orifice (mm)	Actuator (mm)	Kv (m ³ /h)	Max working pressure at 180°C (Mpa)	Pressure range (Mpa)	Min control pressure (Mpa)
DN10	3/8"	13	50	4.7	1.6	0-1.6	0.45
DN15	1/2"	13	50	4.7		0-1.6	0.45
DN20	3/4"	18	50	9.5		0-1.0	0.45
DN25	1"	24	63	18.1		0-0.8	0.45
DN32	1-1/4"	31	80	23.1		0-1.1	0.4
			80	32.9		0-0.8	0.4
DN40	1-1/2"	35	100	32.9		0-1.6	0.4
			100	52.8		0-0.9	0.4
DN50	2"	45	100	52.8			

H2500 Normal open

Normal open with flow direction



Size	End	Orifice (mm)	Actuator (mm)	Kv (m ³ /h)	Max working pressure at 180°C (Mpa)	Pressure range (Mpa)	Min control pressure (Mpa)
DN10	3/8"	13	50	4.7	1.6	0-1.6	0.35
DN15	1/2"	13	50	4.7		0-1.6	0.35
DN20	3/4"	18	50	9.5		0-1.6	0.35
DN25	1"	24	63	18.1		0-1.6	0.45
DN32	1-1/4"	31	63	23.1		0-1.4	0.45
			63	32.9		0-1.1	0.45
DN40	1-1/2"	35	63	32.9		0-0.6	0.5
			80	52.8		0-1.2	0.5
DN50	2"	45	80	52.8			



Certificate Number: 8711



EUROTEC 3/2-way Solenoid Valve

Direkt gesteuertes Sitzventil mit 3/2-wege Funktion

Directly operated poppet valve
with 3/2 way function

Beschreibung Description

Standard Item: MD32-HS18 MD32-HS14

- Magnetventil In-line, direkt gesteuert, 3/2-wege, mit Magnetspule und Gerätestecker mit Ausgang M16 für Kabeldurchmesser 5-6mm
- Luftanschluss: G1/8"
- Hohlsschraube: G1/8" oder G1/4"
- Mechanische Federrückstellung
- Serienmäßig mit selbstsichernder Handnotbetätigung aus Messing
- Gehäuse Aluminium eloxiert, mit minimalen Außenabmessungen
- Dichtungen NBR, Schrauben Edelstahl 1.4301
- Medium: Gereinigte und geölte oder nicht-geölte Druckluft mit Qualitätsstufe 5 nach ISO 8573-1
- Anwendung: Ansteuerung von einfachwirkenden und doppelwirkenden pneumatischen Schwenkantrieben

- Solenoid valve In-line, directly operated, 3/2 way, with magnet coil and connector with exit M16 for cable diameter 5-6mm
- Air supply: G1/8"
- Hollow bolt: G1/8" or G1/4"
- Standard self-locking brass manual override
- Body anodised aluminum, with minimal external dimensions
- Sealings NBR, Stainless steel screws AISI 304
- Media: Cleaned and lubricated or non-lubricated compressed air with a quality level 5 according to ISO 8573-1
- Application: Control of spring return and double acting pneumatic actuators

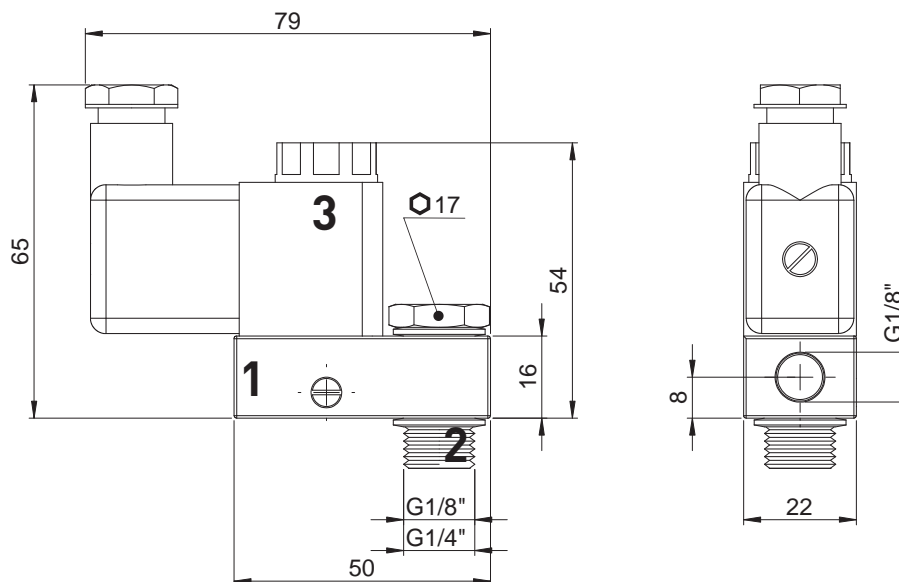
Model: MD32-HS



**IP65
-20°C...+50°C**



Maßzeichnung Dimensions





EUROTEC 3/2-way Solenoid Valve

Direkt gesteuertes Sitzventil mit 3/2-wege Funktion

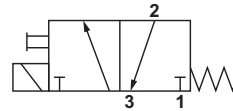
Directly operated poppet valve with 3/2 way function

Technische Daten Technical features

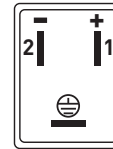
Standard Item: MD32-HS18 MD32-HS14

Luftanschluss Air entry	G 1/8"
Hohlschraube Hollow bolt	HS18: G1/8" HS14: G1/4"
Nennweite Dimension	1,3mm
Arbeitsdruck Air pressure	0-10 bar
Temperatur Temperature	-20°C ... +50°C
Schutzart Enclosure	IP65 - DIN 40050
Spannung Voltage	DC: 12V, 24V, 110V AC: 24V, 48V, 115V, 230V
Leistung Power consumption	DC: 3W / AC: 5VA
Nenndurchfluss Air flow	50 l/min

3/2-Wege 3/2 way



Anschluss Wiring



in-line

Zubehör auf Seite 104
Accessories on page 104

Artikelnummer Code number

MD32 -HS

Spannung Voltage
012 12V
024 24V
048 48V
110 110V
115 115V
230 230V

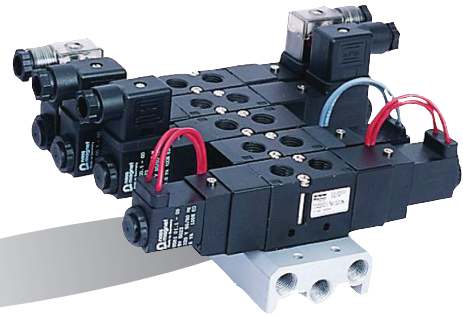
Spannungsart Voltage type
DC Gleichspannung Direct voltage
AC Wechselspannung Alternating voltage
Anschluss Connection
14 G1/4 G1/4
18 G1/8 G1/8
Zubehör Accessories

5 Port pilot operated Solenoid Valve

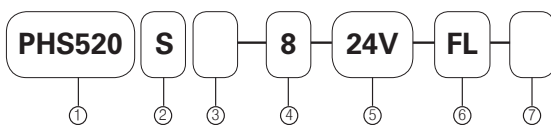
PHS520 Series

Rubber Seal / In-Line Type

2 Position Single solenoid	PHS520S	
2 Position Double solenoid	PHS520D	
3 Position Center Closed	PHS520C	
3 Position Exhaust Center	PHS520E	
3 Position Pressure Center	PHS520P	



ORDER KEY



1. Series

5 Port Solenoid Valve

2. Function

S	Single Solenoid
D	Double Solenoid
C	Center Closed
E	Exhaust Center
P	Pressure Center

3. Pilot

No mark	Internal Pilot
X	External Pilot

4. Port Size

8	PT 1/8"
---	---------

5. Voltage

24V	DC24V
110V	AC110V
220V	AC220V

6. Wiring

No mark	Lead Wire
FL	Lead Wire w/Lamp Indicator
D	DIN Connector
DL	DIN Connector w/Lamp Indicator

7. Manual Override

No mark	Non-Lock
L	Lever-Lock

Specifications

Model No	Unit	PHS520S	PHS520D	PHS520C	PHS520E	PHS520P
Fluid		Non-lubricated / Lubricated Air				
Port Size		PT 1/4"				
Effective Area	mm ² (Cv)	18 (1.0)		14 (0.8)		
Temperature Range	°C	5 ~ 60°C				
Pressure	MPa(bar)	0.15 ~ 0.9 (1.5 ~ 9.0)	0.1 ~ 0.9 (1.0 ~ 9.0)	0.2 ~ 0.9 (2.0 ~ 9.0)		
Max. Operating Cycle	cycle/s	10		3		
Response Time	ms	20 or less		35 or less		
Exhaust Type		Individual Exhaust				
Manual Override		Non-lock (Standard), Lever-lock (Option)				
Shock/Vibration Resistance	m/s ²	30G ~ 5G (8.3 ~ 200Hz)				

Electrical Specifications

Voltage	V	DC24V, AC110V, AC220V (50 ~ 60Hz)
Allowable Voltage Fluctuation	%	±10%
Power Consumption	W, VA	DC24V (3W), AC110/220V (50Hz: 5.0VA, 60Hz: 4.2VA)
Insulation Class		F
Wiring		Lead Wire, DIN Connector
Indicator Light		LED

Coil & Connector

Coil



Voltage		Wiring	
24V	DC24V	No mark	Lead Wire
110V	AC110V	FL	Lead Wire w/Lamp Indicator
220V	AC220V	D	DIN

Explosion Proof Coil
PEC5-22-EX-24V

Voltage	
24V	DC24V
110V	AC110V
220V	AC220V

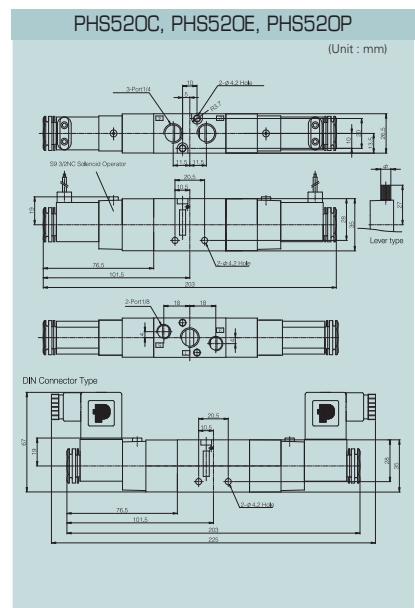
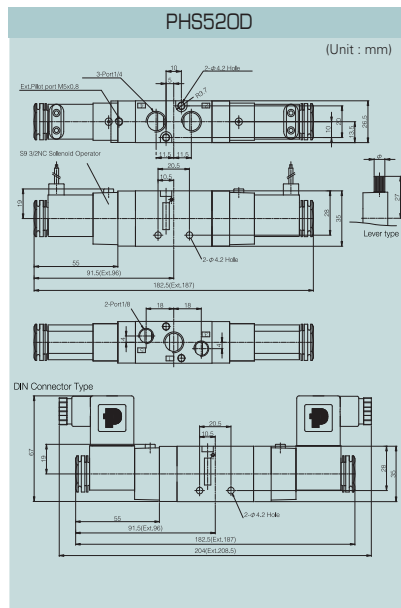
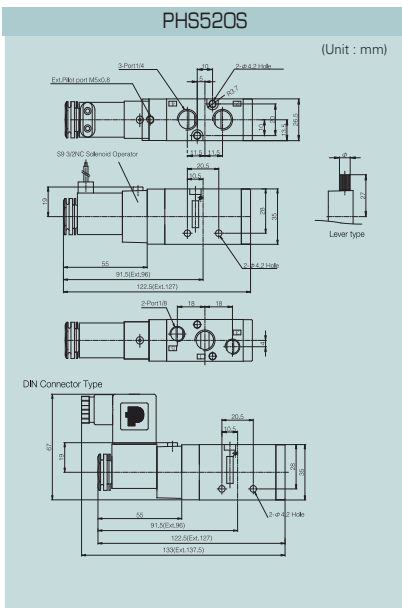
Note) Explosion Proof Coil can be applied to the PHS Series and the grade is EX m II T4

Connector



Lamp Indicator		Voltage	
No mark	Non-lamp Indicator	24V	DC24V
L	Lamp Indicator	110V	AC110V
		220V	AC220V

Dimensions



Manifold

ORDER KEY

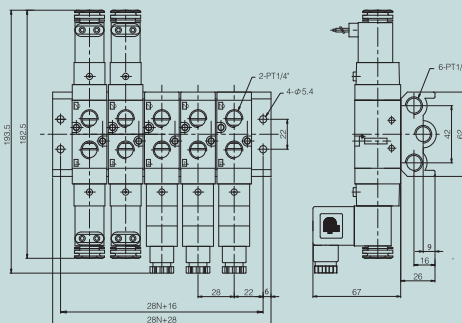
PHS520	M5
Valve	Station
PHS520 Series	M2 2 Station
	:
	M10 10 Station

Specifications

Port Size	Port 1 Port 3, 5	Common Supply: Rc1/4 Common Exhaust: Rc 1/4
Station	2 ~ 10 Station	
Mounting	Direct mount	
Valve	PHS 520	
Blanking Plate	PHS520 - BP	

Dimensions

PHS520S, D



PHS520C, E, P

