



SPECIFICATION:

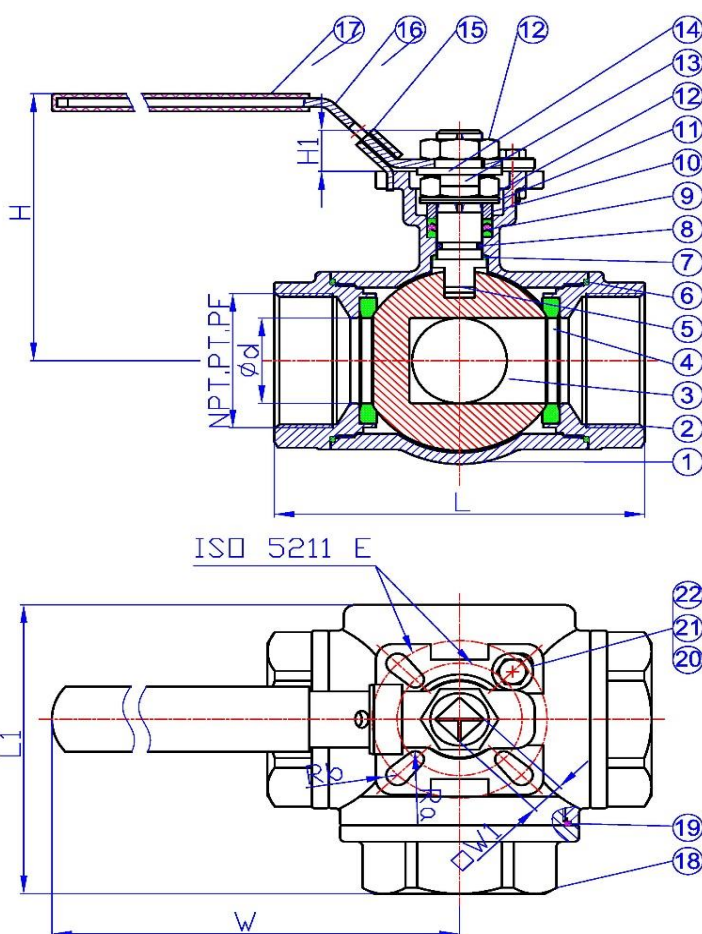
- 3-way standard port
- Available L-port or T-port with 360° turning
- Investment casting body A351 Gr-CF8M
- Blow-out-proof stem
- ISO 5211 DIN3337 direct mounting pad
- Working pressure up to 1000psi W.O.G
- Working temperature up to 180° C

PRESSURE TEST

BODY		SEAT	
by water		by water	by air
105 kg/cm ²		80 kg/cm ²	6 kg/cm ²

MATERIAL LIST

NO.	PART NAME	MATERIAL
1	Body	CF8M
2	Cap	CF8M
3	Ball	CF8M
4	Seat	R-PTFE
5	Stem	SUS316
6	Gasket	PTFE
7	Thrust washer	15% R+PTFE
8	O-ring	VITON
9	Packing	PTFE
10	Gland	SUS304
11	Spring washer	SUS304
12	Stem nut	SUS304
13	Belleville washer	SUS304
14	Handle washer	SUS304
15	Locking device	SUS304
16	Handle	SUS304
17	Handle sleeve	PLASTIC
18	Cap	CF8M
19	Gasket	PTFE
20	Stopper pin	SUS304
21	Bolt	SUS304
22	Nut	SUS304



DIMENSIONS

SIZE		L	L1	H	W	H1	W1	ISO5211	Ø E	ACTUATOR		
G	d									DA	SR	EL
1/4	11.6	76	58.5	73	123	9	9x9	F03-F04	36-42	AD50	AS65	ATM40
3/8	12.5	76	58.5	73	123	9	9x9	F03-F04	36-42	AD50	AS65	ATM40
1/2	12.5	76	58.5	73	123	9	9x9	F03-F04	36-42	AD50	AS65	ATM40
3/4	16	86	72	76	123	9	9x9	F03-F04	36-42	AD50	AS65	ATM40
1	20	99	81.5	87	153	11	11x11	F04-F05	42-50	AD50	AS65	ATM40
1-1/4	25	117	94.5	93	153	11	11x11	F04-F05	42-50	AD65	AS80	ATM80
1-1/2	32	124	104	110	183	14	14x14	F05-F07	50-70	AD65	AS80	ATM80
2	38	148	125	119	183	14	14x14	F05-F07	50-70	AD65	AS80	ATM80

The specification and dimensions are subject to change without prior notice!